



# p40-phox (phospho Thr154) Polyclonal Antibody

<b>Catalog No</b>	YP-Ab-02424
<b>Isotype</b>	IgG
<b>Reactivity</b>	Human;Mouse
<b>Applications</b>	IHC;IF;ELISA
<b>Gene Name</b>	NCF4
<b>Protein Name</b>	Neutrophil cytosol factor 4
<b>Immunogen</b>	The antiserum was produced against synthesized peptide derived from human p40 phox around the phosphorylation site of Thr154. AA range:120-169
<b>Specificity</b>	Phospho-p40-phox (T154) Polyclonal Antibody detects endogenous levels of p40-phox protein only when phosphorylated at T154.
<b>Formulation</b>	Liquid in PBS containing 50% glycerol, 0.5% BSA and 0.02% sodium azide.
<b>Source</b>	Polyclonal, Rabbit,IgG
<b>Purification</b>	The antibody was affinity-purified from rabbit antiserum by affinity-chromatography using epitope-specific immunogen.
<b>Dilution</b>	WB 1:500-2000 ,IHC: 1/100 - 1/300. ELISA: 1/5000.. IF 1:50-200
<b>Concentration</b>	1 mg/ml
<b>Purity</b>	≥90%
<b>Storage Stability</b>	-20°C/1 year
<b>Synonyms</b>	NCF4; SH3PXD4; Neutrophil cytosol factor 4; NCF-4; Neutrophil NADPH oxidase factor 4; SH3 and PX domain-containing protein 4; p40-phox; p40phox
<b>Observed Band</b>	
<b>Cell Pathway</b>	Cytoplasm, cytosol . Endosome membrane ; Peripheral membrane protein ; Cytoplasmic side . Membrane ; Peripheral membrane protein .
<b>Tissue Specificity</b>	Expression is restricted to hematopoietic cells.
<b>Function</b>	function:Component of the NADPH-oxidase, a multicomponent enzyme system responsible for the oxidative burst in which electrons are transported from NADPH to molecular oxygen, generating reactive oxidant intermediates. It may be important for the assembly and/or activation of the NADPH-oxidase complex.,similarity:Contains 1 PX (phox homology) domain.,similarity:Contains 1 SH3 domain.,subunit:p40-PHOX associates primarily with p67-PHOX to form a complex with p47-PHOX.,tissue specificity:Expression is restricted to hematopoietic cells.,
<b>Background</b>	The protein encoded by this gene is a cytosolic regulatory component of the superoxide-producing phagocyte NADPH-oxidase, a multicomponent enzyme system important for host defense. This protein is preferentially expressed in cells of myeloid lineage. It interacts primarily with neutrophil cytosolic factor 2 (NCF2/p67-phox) to form a complex with neutrophil cytosolic factor 1



(NCF1/p47-phox), which further interacts with the small G protein RAC1 and translocates to the membrane upon cell stimulation. This complex then activates flavocytochrome b, the membrane-integrated catalytic core of the enzyme system. The PX domain of this protein can bind phospholipid products of the PI(3) kinase, which suggests its role in PI(3) kinase-mediated signaling events. The phosphorylation of this protein was found to negatively regulate the enzyme activity. Alternatively spliced transcript variants encoding d

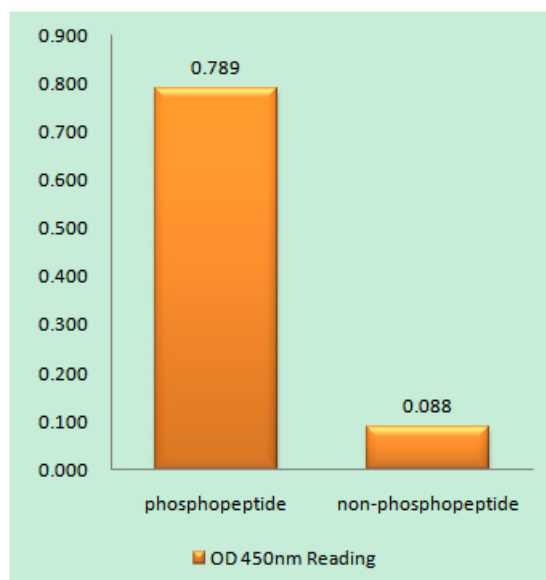
#### matters needing attention

Avoid repeated freezing and thawing!

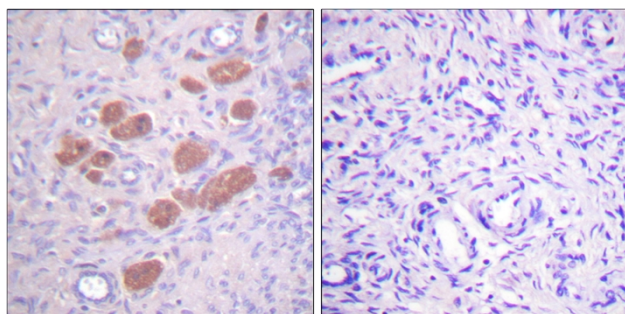
#### Usage suggestions

This product can be used in immunological reaction related experiments. For more information, please consult technical personnel.

### Products Images



Enzyme-Linked Immunosorbent Assay (Phospho-ELISA) for Immunogen Phosphopeptide (Phospho-left) and Non-Phosphopeptide (Phospho-right), using p40 phox (Phospho-Thr154) Antibody



Immunohistochemistry analysis of paraffin-embedded human ovary, using p40 phox (Phospho-Thr154) Antibody. The picture on the right is blocked with the phospho peptide.